

[Log out](#) | [My TechRepublic](#) | [Help](#)

SEARCH: in Support GO [Home](#)[CIO](#)[IT Manager](#)[NetAdmin](#)[Developer](#)[Support](#)[IT Consultant](#)

▼ advertisement

24-Hour Access to Essential Information—FREE Now for a Limited Time

- [Network/System Administration](#): Windows NT/2000/.NET/XP, NetWare, Linux/UNIX
- [PC Troubleshooting/Maintenance](#): TCP/IP Issues, Windows XP, Securing Your Data, and more
- [Infrastructure](#): Cisco, Internetworking, Network Infrastructure Issues
- [Help Desk/Support](#): Windows 9x/NT/2000/XP, Linux/UNIX

[Home](#): [Support](#): [Software](#): Article

Support Topics:

[Hardware](#)[Career](#)[Software](#)[User Support](#)

Resources:

[TechProGuild](#)[E-newsletters](#)[Discussion Center](#)[Technical Q&A](#)[Downloads](#)[Free Product Info](#)[Books & CDs](#)[Peer Directory](#)

▼ advertisement

Windows 2000 Insider

Control Windows Explorer with command-line switches

Mar 13, 2002 | [Jim Boyce](#) | [E-Mail](#) | [Archive](#)

Rating: 4.1 / 5 | [Rate this article](#)

Windows Explorer offers several command-line switches that can control the way it works. For example, by default, Windows Explorer opens the My Documents folder, but you can use a switch to have it open My Computer or any other folder instead. You can also direct Windows Explorer to select a specific folder or file when it opens and appear in either a multipane or single-pane view. Here's how.

Explorer switch definitions

The syntax for Windows Explorer is as follows:
EXPLORER.EXE [/n] [/e] [(,)/root,<object>]
[/select,<sub object>]

Here are the command-line switches you can use to tailor Windows Explorer to fit your needs:

- **/n** opens Windows Explorer in single-pane view, which is similar to the view you see when you open My Computer.
- **/e** opens Windows Explorer in multipane view, which is the view used when you open it from the default Windows Explorer shortcut on the Start menu.
- **/root,<object>** specifies the folder that you want Windows Explorer to use as the root for the view. For example, you might specify a UNC path to open Windows Explorer with the shared network folder as the root of the view.
- **/select,<sub object>** opens Windows Explorer with the file, folder, or application specified by <sub object> selected.

Using Explorer switches

To edit the Windows Explorer command line, simply click Start | Programs | Accessories and then right-click Windows Explorer to open the Shortcut tab of the Windows Explorer Properties sheet shown in **Figure A**.

Today in TechRepublic

Articles:

[New firewall locks down desktops](#)

[Configure Windows XP Professional to be a VPN server](#)

[Take a look at the latest integrated PDA/cell phone devices](#)

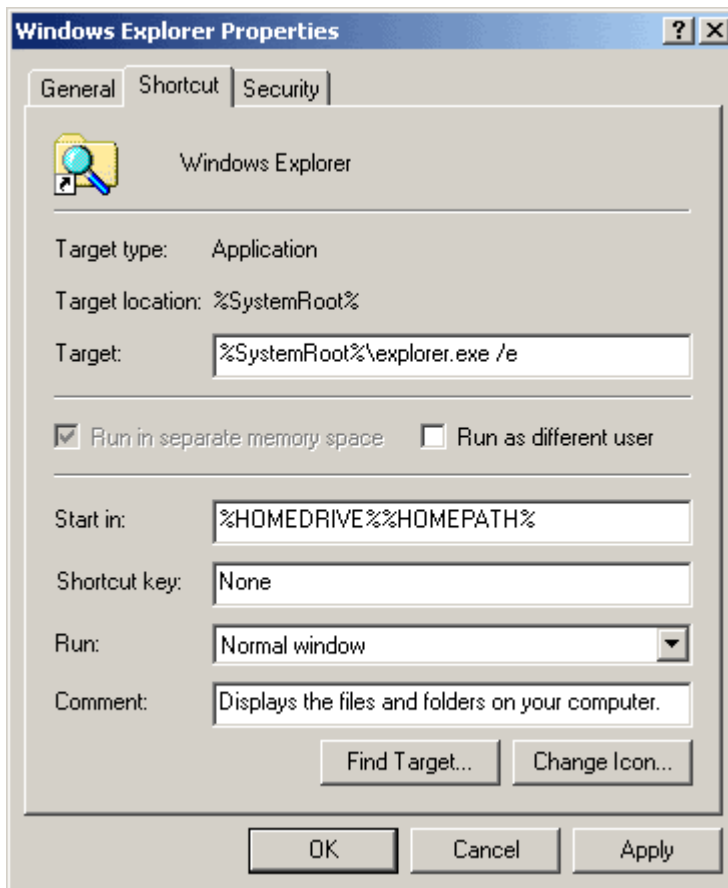
Today's Topics:

[Outsourcing/Consulting](#)

[Enterprise Applications](#)
[Software - Server](#)
[Web Hosting](#)
[Linux](#)

**Enhance
your
enterprise
solutions
with higher-
performing
Intel®
Pentium® 4
processors.**

Figure A



Add the desired switches to the Target field and click OK when you're finished. The next time you click on the Windows Explorer icon, your new switches will take effect.

To make Windows Explorer open the My Computer folder when you click the Windows Explorer shortcut on the Start menu, change the value in the Target field to reflect the following:

```
%systemroot%\explorer.exe /e,::{20D04FE0-3AEA-1069-A2D8-08002B30309D}
```

This example allows Windows Explorer to open in multipane view rooted on the UNC path "\\server\docs":

```
%systemroot%\explorer.exe /e,/root,\\server\docs
```

Share your command-line tips

Do you use command-line switches to make supporting your end users easier? Do you have a favorite command-line switch? [Post a comment to this article](#) and share your knowledge.

Featured Product:



A Linux must for CIOs and IT managers!

- Create a plan to use Linux
- Budget vs. actual
- Answers from real Linux users
- Infrastructure issues

[Get more info](#)

Jump to Page: 1

[Rate](#)[E-mail](#)[Print](#)[Save](#)[Discuss](#)

Discussions

Click on a top-level comment to explore tree (7 total replies - 0 **NEW**)[Keyboard shortcut to open Explorer.](#)

kirk_reed@agilent.com | 3/19/02

[Free command line utilities](#)

dgood@psea.org | 3/19/02

[\[MORE \]](#)[Explore this Discussion](#) | [Add your comment](#)

Related Items:

- [Prevent users from shutting down computers](#)
(Article)
- [Manage Windows 2000 files with FIND and RD](#)
(Article)
- [Rename the Windows Recycle Bin with this registry](#)
(Article)
- [Use the ASSOC command to associate file types](#)
(Article)
- [Prevent users from renaming My Computer](#) (Article)

Related TechMails:

Subscribe to these free e-newsletters **now!**

- [Help Desk](#)
- [Windows NT](#)
- [IT Trainer Digest](#)

[More Newsletters](#)**[Sign up for the Windows 2000 TechMail today!](#)**

Get valuable tips, links to Windows resources, and much more, all delivered straight to your inbox, absolutely free.

[Location](#) | [Partners](#) | [Press Room](#) | [Author Bios](#) | [Content Services](#) | [Jobs](#) | [Affiliate Program](#)CNET Networks: [Builder](#) | [CNET](#) | [GameSpot](#) | [mySimon](#) | [TechRepublic](#) | [ZDNet](#) [About CNET Networks](#)[About Us](#) | [Contact Us](#) | [Corrections](#) | [How to Advertise](#)[Copyright](#) ©1995- 2002 CNET Networks, Inc. All Rights Reserved. | [Privacy Policy](#) | [Terms & Conditions of Usage](#)